

A New Subspecies of *Cantharis hatchi* McKey-Fender¹
(Coleoptera : Cantharidae)

KENNETH M. FENDER

Linfield Research Institute, McMinnville, Oregon

In describing *Cantharis (Cultellunguis) hatchi*, Dorothy McKey-Fender (1950) noted two atypical females from Catalina Island in which the elytra are entirely testaceous rather than piceous and considered them likely to represent a good subspecies. A collection of Cantharidae from the University of California at Davis, California, kindly loaned me by Dr. Robert O. Schuster, includes a series of eleven males and six females of this variant, all from Avalon, Santa Catalina Island, California.

Cantharis (Cultellunguis) hatchi dorothyae
Fender, new subspecies

Morphologically similar to *C. hatchi hatchi* McKey-Fender. Testaceous, metasternum piceous to brunneous, knees black, abdomen piceous to brunneous, male last two sternites somewhat paler, female apical half of last sternite flavous,

¹ This study was supported by National Science Foundation Grant: GB-6283X.

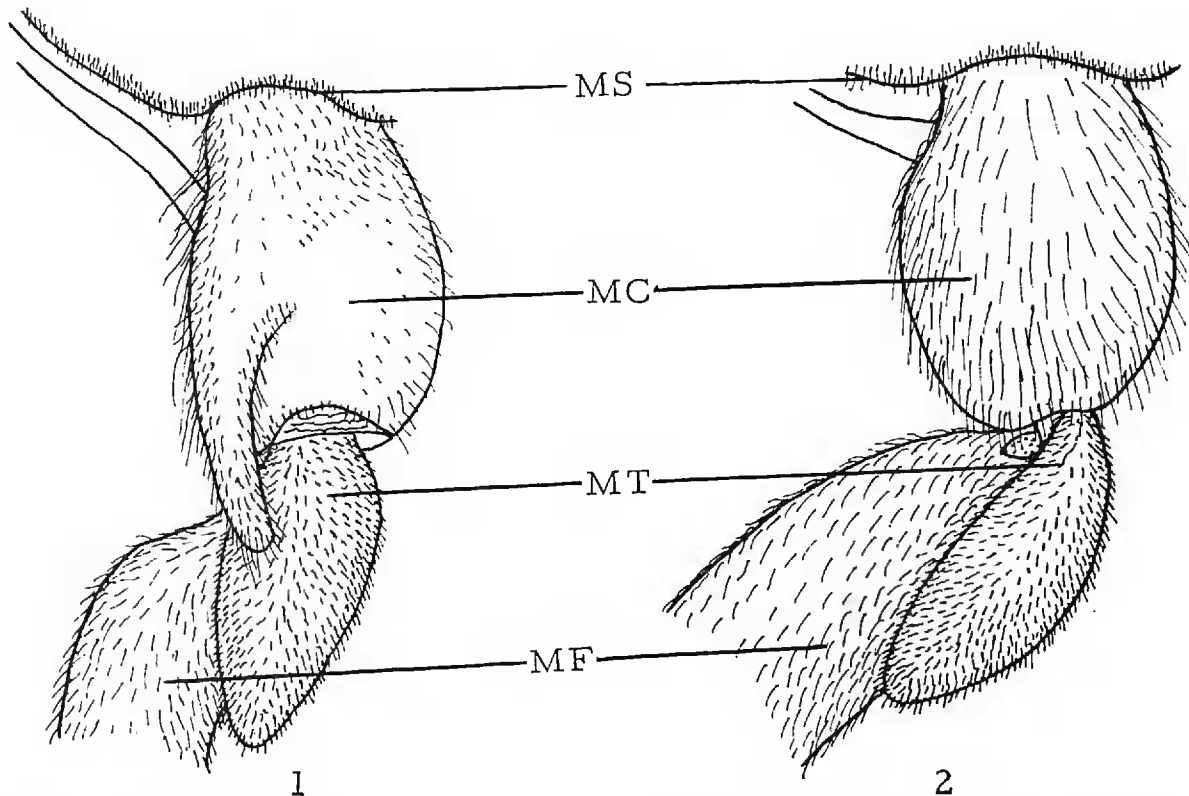


FIG. 1. Basal portions of hind leg of male of *Cantharis (Cultellunguis) hatchi dorothyae* Fender showing conical projection of metacoxa. FIG. 2. Same of normal metacoxa of *Cantharis (Cultellunguis) americana* Pic. Symbols: MS, hind margin of metasternum; MC, metacoxa; MT, metatrochanter; MF, metafemur.

pubescence cinereous, long erect hairs of elytra sometimes becoming aureous to cupreous towards elytral apices; pronotum a little broader than long.

Dimensions. Male: Length 7.5 to 10.5 (av. 9.8) mm; width near elytral bases 1.5 to 2.25 (av. 1.87) mm; antennal length 6 to 7 (av. 6.5) mm. Female: Length 9 to 11 (av. 9.9) mm; width near elytral bases 2 to 2.25 (av. 2.1) mm; antennal length 5.5 to 7 (av. 6.25) mm.

Holotype male.—AVALON, SANTA CATALINA ISLAND, CALIFORNIA, 27 May 1932. Allotype female, same locality, 16 May 1932. Paratypes, 10 male and 5 female, same locality, 2 May to 25 May 1932.

Cantharis hatchi dorothyae differs from *C. hatchi hatchi* in having testaceous elytra, from other testaceous species of the subgenus *Cultellunguis* (fig. 2) by the conical projections of the male metacoxae (fig. 1).

A large number of *C. hatchi hatchi* have been seen from continental California. Whereas there is a bit of variation in the elytral coloration, none can by any means be characterized as testaceous, suggesting that *C. hatchi dorothyae* is confined to Santa Catalina Island.

LITERATURE CITED

- McKEY-FENDER, D. 1950. Notes on *Cantharis* III (Coleoptera : Cantharidae). Pan-Pac. Entomol., 26 (1): 25-79, 20 figures.

Some New Mayflies of the Subfamily Leptohiphinae (Ephemeroptera : Tricorythidae)

VELMA KNOX MAYO
Tucson, Arizona

Among the mayflies collected by the writer in Macuchi, Cotopaxi Province, Ecuador were three new species of nymphs of *Leptohiphes*. Also a male specimen with unique genitalia was taken and herein described as a new genus as follows:

Cotopaxi Mayo, new genus (Figs. 1-7)

Distinguishing characteristics of *Cotopaxi* include: unique form of genitalia; membranous processes on wings, absence of hind wings, CuP strongly arcuate, cross veins few in number, compound eyes small, well separated dorsally; small species about 4 mm in body length, wings about 8 mm.

The type species of *Cotopaxi* is *C. macuchae* Mayo, new species.